



CHANGING  
PHARMACIES  
FOREVER

||| HIGH-TECH  
DRIVEN BY  
CUSTOMER  
SATISFACTION



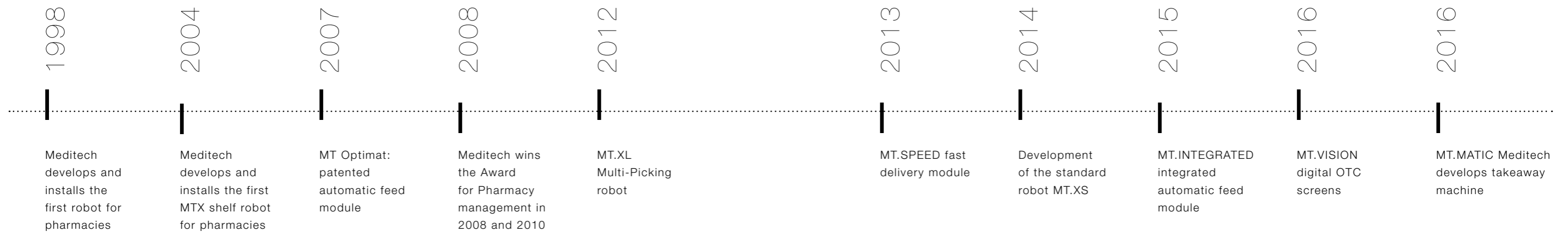
**In recent years, automation became an increasingly important factor in public pharmacy.**

.....  
Larger public space, optimization of the inventory and lower personnel costs are the basis for the implementation of pharmacy automation.

-  
With over 75 years' experience in the pharmacy sector, Meditech is one of the market leaders in the development and manufacture of automation solutions for the public and hospital pharmacies. As the only Belgian manufacturer of pharmacy automation, we are able to distinguish ourselves through our customer-oriented and tailor-made approach.

-  
A thorough knowledge of technological processes and our expertise in the pharmacy sector enable us to realize the most complex projects smoothly and according to your requirements.

-  
The purchase of a pharmacy automation is a commitment for years. Our commitment to our customers is large and we guarantee excellent technical support and after-service for the entire period of use of the system. Our customers are the most valuable asset of our company and we strive for 100% customer satisfaction.





**2 - 3** INTRO

**4 - 5** TIMELINE  
History and future

**8 - 9** ONE STOP SHOP  
A complete portfolio

**10 - 11** TOTAL AUTOMATION  
The pharmacy of the future

**12 - 15** R&D  
Innovative thinking  
and development

**16 - 17** CUSTOMIZATION  
Revolutionary dispenser

**18 - 19** SERVICE  
Installation and aftercare

**20 - 25** MT.XL  
Multi Picking Robot

MT.OPTIMAT &  
**26 - 29** MT.INTEGRATED  
Fully automated storage

**30 - 33** MT.SPEED  
Revolutionary dispenser

**34 - 37** MT.VISION  
Virtual OTC & Visualisation

**38 - 39** CONTACT  
Meditech Worldwide





**A complete portfolio of services under the same flag, through a single point of contact.**

.....  
So we can guarantee you a flawless communication and action very short time. You buy directly from the producer, or through our exclusive dealer network in your country.





**Meditech is the only producer to offer an integrated and compact solution for the TOTAL pharmacy automation.**

We do not only offer the robot, but also all the peripherals that guarantee optimum stock management in your pharmacy.

**MT.XL**

Fully automatic sorting, checking and storage of your medication.

- Functional management of expiry dates and non-sold medication.

- Thanks to its intelligent storage control and the innovative Meditech gripper technology you always have direct access to one or more packages

**MT. SPEED**

Hybrid module is available for fast delivery of your top 100 products.

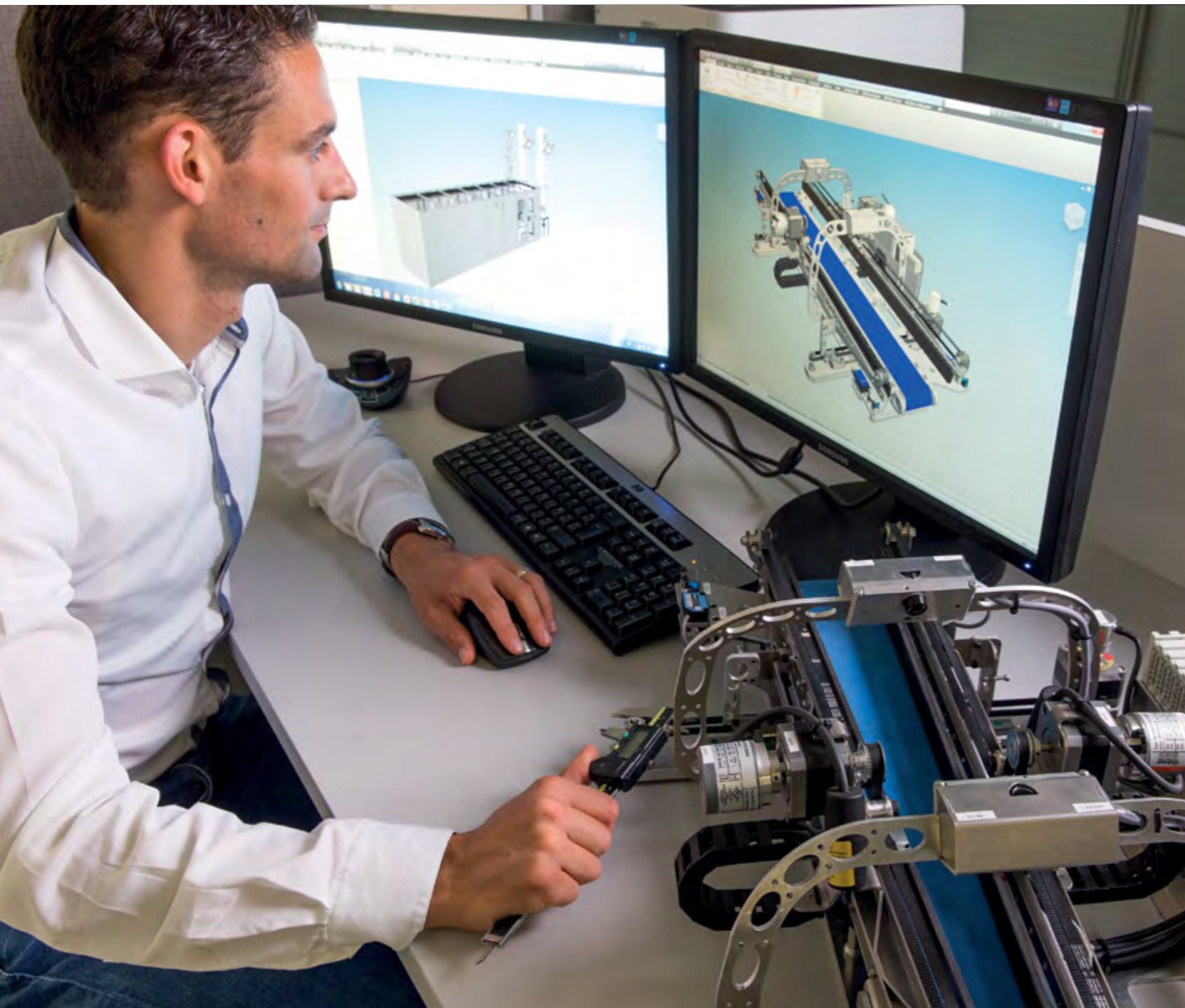
**MT. VISION**

Digital touch screens enhance your advice and information to your patients.

**MT.MATIC**

The external 'click & buy'- module - autonomous or linked to your robot in the pharmacy.





Innovative thinking and development of both products and processes are the cornerstone of our R&D-department. Using the most high-quality materials ensure a stable and sustainable operation. In-house R&D ensures that we efficiently meet the needs of the pharmacy market and anticipate quickly to changes or questions from our customers.

**Meditech offers unique advantages:**

Lowest total cost of ownership. Lowest consumption of all available robots on the market - ECO efficiency.

- Up to 70% less power consumption than the competition.

- Lowest rates for maintenance and service contracts.

**The only robot built with only industrial components.**

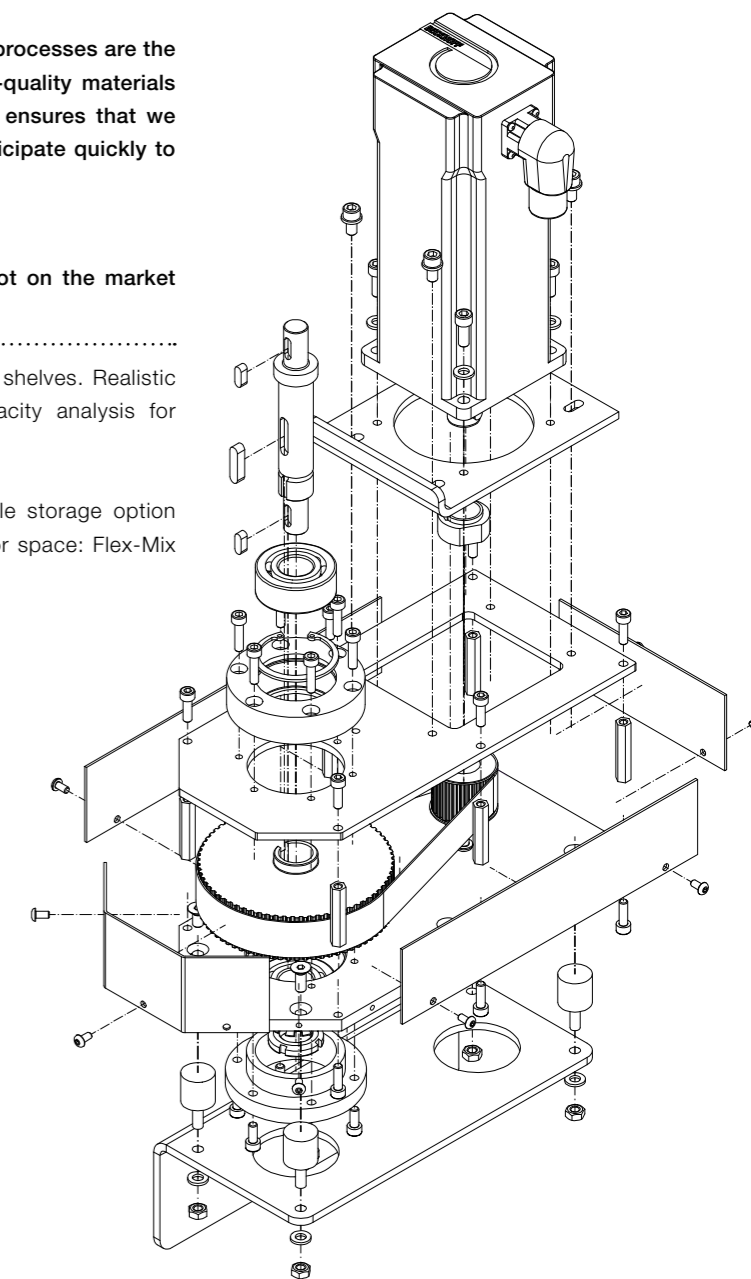
10 years Cycle Lifetime warranty on all of its components.

- Unique electronic input module (without mechanical moving parts).

**The narrowest robot on the market (in width)**

Available with wide shelves. Realistic and balanced capacity analysis for optimal storage.

- The highest possible storage option on the smallest floor space: Flex-Mix Storage.





**Unique non-rotating multi picking gripper**

Multi-picking + Multi-Packaging: Several boxes (also of different sizes) on the gripper.

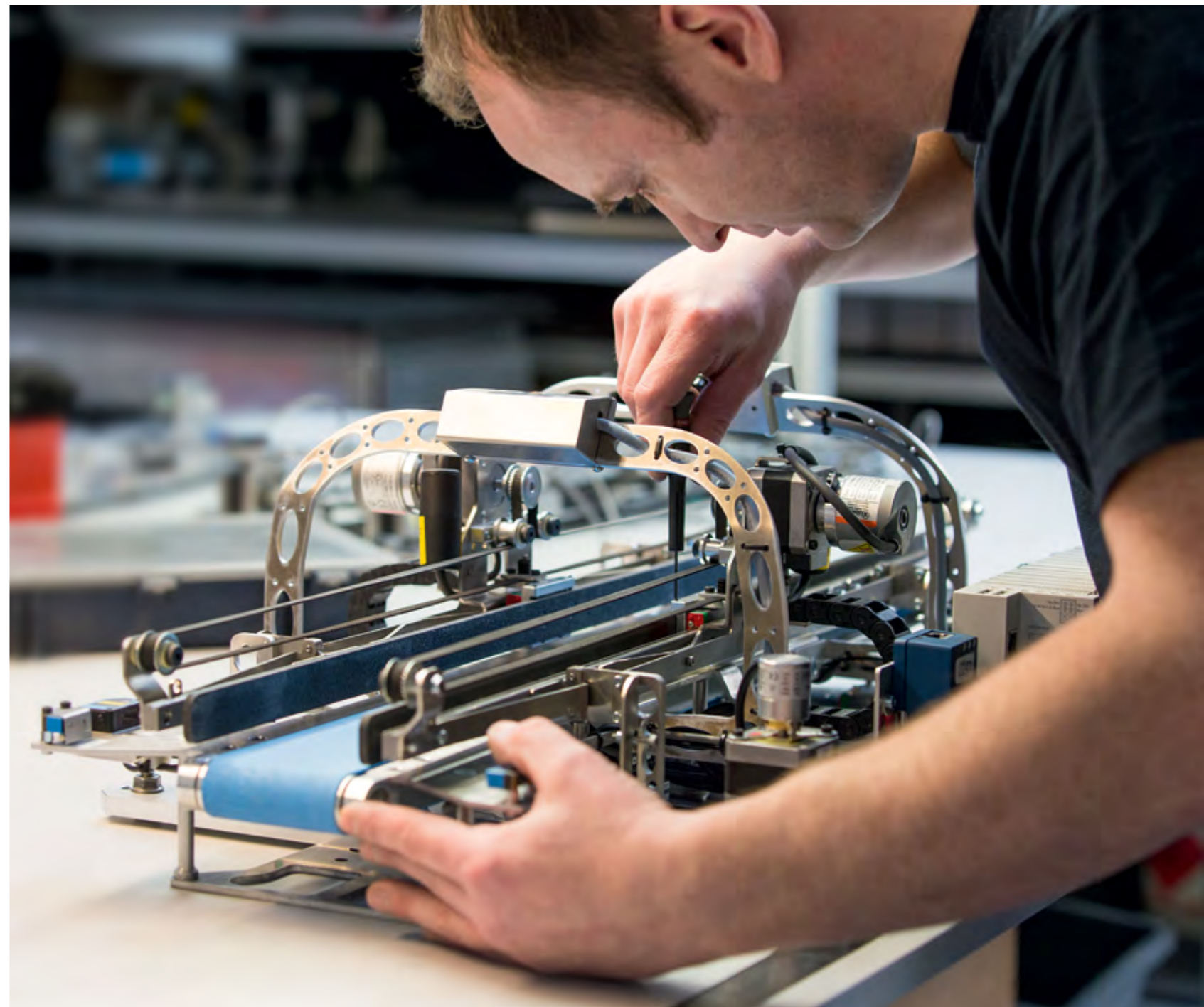
- Non rotating gripper: No wear on rotating elements.
- No time wasted in turning gripper and no inclined packages.
- The 'softest' way to treat your efficiently.
- Continuous video recording on every movement of the robot.

**Unique patented external / internal automatic feed unit: MT.OPTIMAT and MT.INTEGRATED**

- Maximum buffer for entering large amount and orders
- Innovative development without camera or vacuum pump

**'Future proof' in use**

- Processing of 2D matrix codes.
- Use of the electronic prescription - ready.
- Opened packages (semi-IMV). Without opening the blister (conditioning package is retained).
- Multiple entry (of same medication type) = single scanning.







**Meditech develops and manufactures all equipment in their own production area, tailor made for our customers.**

.....  
A customized robot forms a synergy with the interior of your pharmacy and is tailored to the requirements and the use of the pharmacist and his team.

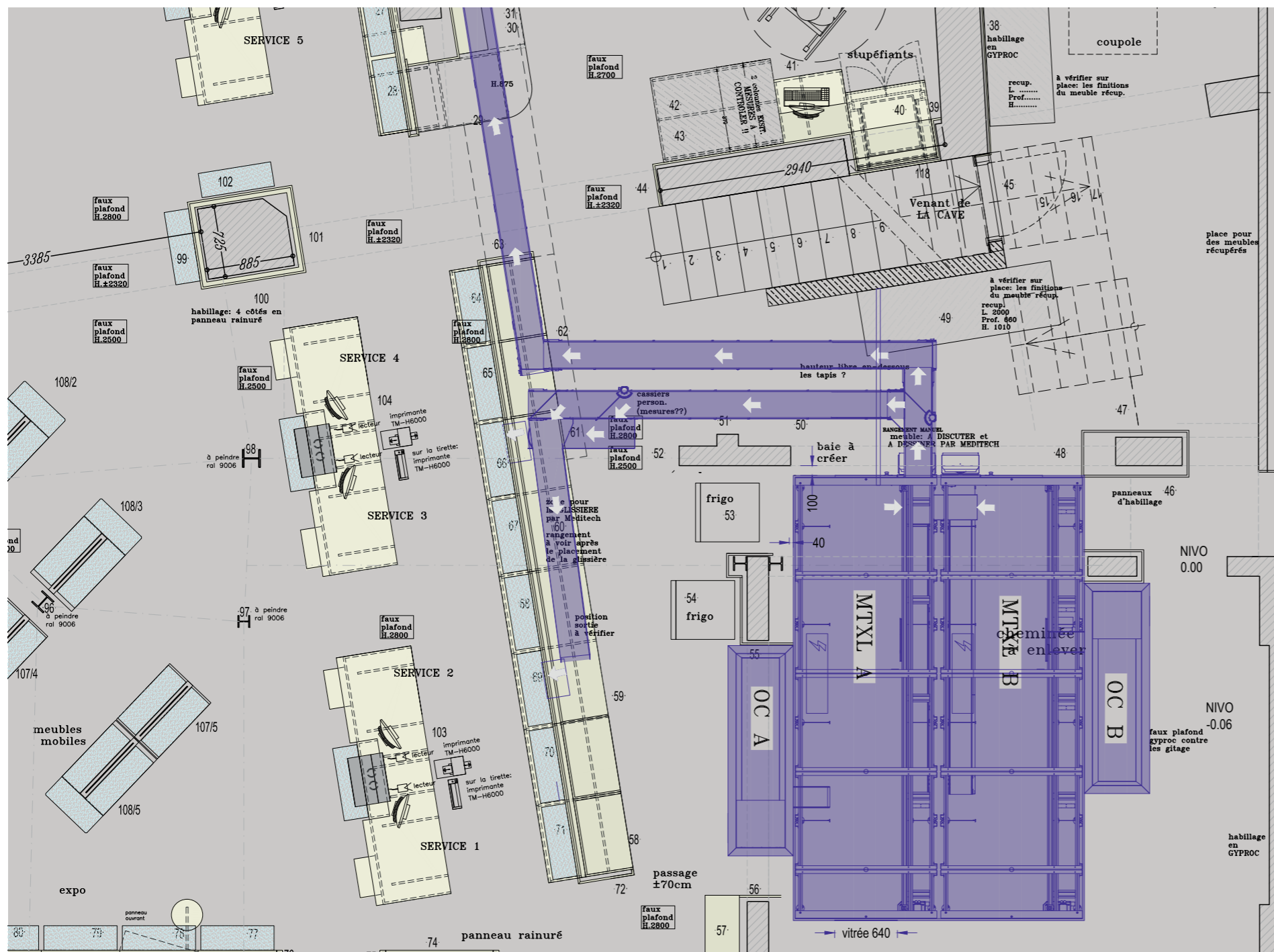
-  
Meditech is the only robot developer where all modules and options can be chosen freely: Location of the door, manual and / or automatic feed module.

-  
With the addition of glazed segments and the wide range of high quality finishing panels, we provide a tasteful architectural interpretation.

-  
Flexibility and craftsmanship make Meditech a reliable partner.



# INSTALLATION, SERVICE AND AFTER-CARE



Global counseling and project management before and after sales.

The optimal assistance and 'thinking' with the customer, always result in a perfect project for you.

Your complete installation process is followed by a single contact person.

He takes care of the coordination with the architect and interior designer.

Coordinates all contacts with the contractors involved.

Regulates the engagement with your pharmacy software.

Ensures the correct installation planning.

Via own installation technicians we guarantee a perfect installation and startup of your installation.

Every installation includes a thorough training for you and your staff.

Your automated robot is optimized to work continuously. To ensure this, our qualified engineers are permanently on hand.

You can count on us every day of the year, 24/7h for both telephone inquiries and/or intervention on site in your pharmacy.

To ensure proper functionality, we offer various maintenance contracts.





The Mediatech-shelf robot is an example of top technology developed to the highest standards within the pharmacy automation. With the minimal width of the robot, we guarantee the highest possible capacity in minimum floor space. Our latest technology surpasses the needs of the pharmacy automation and offers a wide range of standard features.

## MULTI PICKING ROBOT

### THE MT.XL OFFERS THE ONLY FLEXIBLE SOLUTION

As most flexible integrator, we offer you a robot, seamless according to your usage profile and matching your pharmacy design and personal wishes.

- Easy to define charging and delivery points, tailored to your interior.
- Door entrance either long or short side of the robot, ensure perfect implementation in your pharmacy.
- Installation on ground floor, basement or upper floor(s) possible.





**FLEX STORAGE**

.....  
The perfect method to optimally fill your robot.

**NOISELESS MOVING**

.....  
Maintenance-free and fully enclosed guides ensure quiet operation.

**ELECTRONIC ENTRY MODULE**

.....  
Our import module contains no mechanical moving parts, making it unique in its kind.

**MULTI PICKING**

.....  
Treating multiple (different) packages in one movement/delivery batch.

**TWO-WAY-FUNCTIONALITY**

.....  
Treating multiple (up to 8) packages in one 'batch' movement. Boxes are manipulated, both left and right on the gripper. This allows us to avoid a rotating movement of the gripper, which results in a shorter handling time and optimal storage use.

**TOTAL AUTOMATION**

.....  
Huge time savings by the use of the MT.OPTIMAT / MT.INTEGRATED option.

**STOCK MANAGEMENT**

.....  
The electronic identification of the medication, the First Expire First Out management ensure the greatest accuracy in your medicines stock.





**DIMENSIONS**

L: from 4000 to 12000 mm  
 H: from 1985 to 3500 mm  
 W: 1495 mm

-  
 This makes the MT.XL the narrowest and most compact device on the market.

**CAPACITY**

Up to > 45,000 packages with average box L104 x W50 x H30. Personal capacity needs to be determined on the basis of sales volumes of the last 12 months.

**LINEAR GUIDE**

Fully enclosed antistatic guides ensure low noise and precise operation.

**FASTEST COMMUNICATION**

The robot uses the fastest and most accurate PC / PLC Communication Technology (Industry 4.0) available on the market.

**DATA MATRIX**

Using the 2D Matrix Code Readers, the robot manages (without errors) the expiration dates of your medication.

**CONTINUOUS IMAGE RECORDING**

Every movement is closely monitored and recorded by two cameras on the gripper.

**HIGHEST STANDARD OF SECURITY**

Each Meditech robot is equipped with a UPS control unit of the highest class (VFI according to IEC 62040-3): This will ensure continuous operation during power failure but also protects for surge and spikes on the power net.





## FULLY AUTOMATED STORAGE OF YOUR MEDICATION IN YOUR ROBOT

The MT.OPTIMAT and MT.INTEGRATED stores all medication boxes in the robot, without any interference of the pharmacist.

- Simply pour your products, delivered from the wholesaler or manufacturer in the MT.OPTIMAT. The products are then scanned automatically in order to be identified and stored in the robot.

- Linked to your pharmacy software, your orders are accurately controlled, which guarantees a comprehensive stock management.

Easily connectable to your MT.XL shelf robot and standard available in several colors to match your pharmacy interior design.

- Both devices are constructed of low-maintenance industrial components and according to the latest technological developments.

- Full DATA MATRIX - 2D code compliant, reads all barcode types available on the medication market.



**Its innovative exterior without pivoting doors provides a reduced space requirement in your pharmacy.**

Easily connectable to your MT.XL shelf robot and standard available in several colors to match your pharmacy interior design.

Can be placed against each MT.XL (also in a later stage).

Autonomous operation, with priority on the delivery to the patient.

The MT.OPTIMAT unit is always accessible for manual selection of products.

**COMPACT DIMENSIONS**

L: 2145 mm H: 994 mm W: 665 mm

**SPEED**

Processing up to five boxes per minute

**CAPACITY**

Standard buffer to 500 boxes, expandable up to 4,000 boxes

**IDENTIFICATION OF THE PACKAGES**

Full DATA MATRIX - 2D code compliant; reads all barcode types available on the medication market

Unique patented measuring system without sensitive components (no cameras, no vacuum).

**CONSUMPTION**

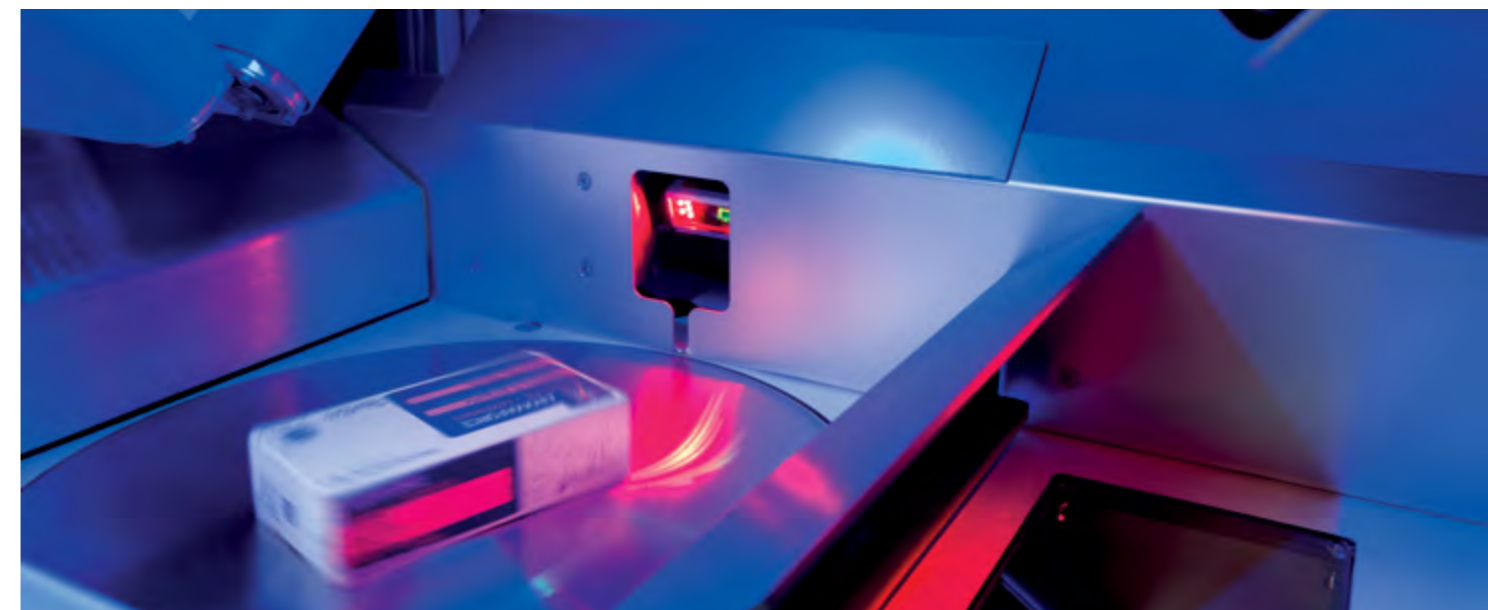
Minimal consumption by newest low-voltage technology.

**INTERNAL CONTROL AND OPERATION**

For the internal control of the robot, we use the fastest possible communications technology available on the market.

**FLEXIBLE INTEGRATION**

Simple and easily installable to various places around the robot (both against long as end side of the robot)



**INTEGRATED AUTOMATIC STORAGE UNIT**

Access to the robot via an ergonomic loading door.

Patented cutting-edge technology without vacuum or sensitive systems camera.

Compact dimensions ensure even ample storage opportunities in the robot.

**COMPACT DIMENSIONS**

Due to its compact dimensions (less than 1/2 storage module) the MT.INTEGRATED fits into any pharmacy.

**SPEED**

Processing up to five boxes per minute.

**CAPACITY**

Standard buffer up to 350 boxes.

**CONSUMPTION**

Minimal consumption by newest low-voltage technology.

**IDENTIFICATION OF THE PACKAGES**

Full DATA MATRIX - 2D code compliant; reads all barcode types available

on the medication market.

Unique patented measuring system without sensitive components.

For the internal control of the robot, we use the fastest possible communications technology available on the market.

Errors with packages are automatically rejected outside the robot. The robot functionality is not interrupted to collect packaging in the robot.



The MT.SPEED is an optional module for the MT.XL. It works autonomously and offers the ability to a fast delivery of a selection of products (high runners) to your selling points.

**IMMEDIATE MEDICATION DELIVERY**

Because of the independent operation of the MT.SPEED-module, packages are delivered simultaneously from both MT.XL as the MT.Speed. Through the statistical rule 5/50: 5% of the stock generates 50% of sales, we offer the ideal combination: the MT.Speed for "fast runners" and the MT. XL for the rest of your stock.

**STOCK MANAGEMENT**

The MT.Speed channels are automatically filled through the MT.XL gripper. MT.SPEED is the only 'fast delivery'-module on the market which has an individual delivery detection for each product channel, which guarantees a 100% correct stock.

**ARTIFICIAL INTELLIGENCE**

The unique self-teaching program, allows the MT.Speed to anticipate in trends in your sales. Depending on the sales, stock in the channels will be fully autonomous and automatically adjusted. The software ensures that each channel is automatically recognized.

**CAPACITY AND DENSITY**

The integration of horizontally mounted channels, ensures efficient volume management. The channels are available in nine different widths and ensure the most favorable filling gradation.

**INTEGRATION**

MT.Speed is smoothly integrated into the MT.XL-robot, taking into account personal needs and your pharmacy architecture.

**HYBRID EXTENSION FOR YOUR ROBOT**







**DIMENSIONS**

Fixed module width of 700 mm, integrable (freely selectable height integration) within the full length of the robot-MT.XL

Max. height 1000 mm per module  
Channel widths:

30/40/50/60/70/80/100/120/150mm

-  
The modules are extensible in time.

**SPEED**

Per channel 10 packages can be delivered in 3 seconds. Each channel can be controlled simultaneously so the delivery rate can still increase exponentially.

**CAPACITY**

Max. 17 boxes per channel and up to 19 channels per module width (layer level)  
Average 11 channels per layer-level, which results in 285 boxes per layer on module width.

**STOCK MANAGEMENT**

The MT.Speed channels are automatically filled through the MT.XL gripper. MT.SPEED is the only 'fast delivery'-module on the market which has an individual delivery detection for each product channel, which guarantees a 100% correct stock.

**ARTIFICIAL INTELLIGENCE**

The unique self-teaching program, allows the MT.Speed to anticipate in trends in your sales. Depending on the sales, stock in the channels will be fully autonomous and automatically adjusted. The software ensures that each channel is automatically recognized.

**CAPACITY AND DENSITY**

The integration of horizontally mounted channels, ensures efficient volume management. The channels are available in nine different widths and ensure the most favorable filling gradation.

**REVOLUTIONARY  
AUTOMAT IN  
YOUR MT.XL  
ROBOT**

# THE OTC WALL OF THE NEXT GENERATION

To improve the quality of advice by means of a correct communication with the aid of an attractive product presentation are fundamental in today's pharmacy. Digital Visualization of your OTC (Over The Counter) products, connected to your robot, are an essential extension of your pharmacy automation process.

## BENEFITS

Digital touch screens replace your OTC products behind the counter and provide a significant added value within your pharmacy.

Digital product information leaflet and chemical composition in various languages.  
- Visualization of the contents of the medication package. Eg. color, shape, packing shape and size of the pills.

## BENEFITS FOR YOU AND YOUR TEAM

Always clean and clear OTC wall presentation

- Never again any incomplete or empty shelves

- No clean or re-organizing of the shelves any more.

- No more changes according to seasonal changes.

- Modern presentation of goods through clear pictures.

- More presentation possibility in limited space.

- Always up-to-date indication of actual product prices and promotions.

- Integration of additional information and video's for each individual product.

- Direct delivery of products out of the robot.

## BENEFITS FOR YOU AS A PHARMACY HOLDER

No visible packaging need

- Less stock needed.

- Optimizing your work processes.

- Additional free resources for other tasks.

- The reduction of the error margins by automate.

## BENEFITS FOR YOUR PATIENTS AND CLIENTS

Attractive and clear presentation of your products.

- A wide range of your assortment.

- Increasing the service and the quality of the advice.





### FEATURES

- .....
- Split screen option to show posts notices on the screens.
- 
- Ability to smoothly integrate publicity on the screens.
- 
- Wallpapers available in all RAL and Pantone colors
- 
- Wide range of diverse backgrounds, tablets and price labels available.
- 
- Pre-programmed pages available (also customizable).
- 
- Category Management possible, according to several medical groups.
- 
- Simple, intuitive adjustment via 'drag & drop' principle.
- Scaled Presentation Packaging: one product, two or more.
- Picture front / 360 °. Capacity (number / volume / weight)
- Product substitution: we show you all the products with the same molecular composition.
- Complementary Products: we also show products which are related to the initial product.
- 
- Possibility to designate product promotions / discounts in various shapes and colors.
- 
- Time-dependent visualization (programmable).
- Morning screens, screens afternoon, weekend screens.
- Other screens during a couple of days, period.

### ADVANTAGES OF THE MT.VISION

- .....
- Guarantee of continuity of all available High-Res product pictures.
- Pictures of packaging
- Pictures of the content
- 
- All leaflets available in pdf in D, F, E and G.
- 
- Own internal software development 'Future proof'.
- 
- Regular updates to graphics options (new backgrounds, tablets, price tags, ...).
- 
- Link with own MT.XL & MT.XS-robot
- both designed in-house and specifically matched for optimum use.
- 
- Robot stock visible from screen using discrete tag.
- 
- Link with your wholesale (Febelco, Belmedis ...) which shows if online product is available.
- 
- Installation by our own technical service with 24/7 help desk availability.
- 
- Remote login possible by our technicians.
- 
- Affordable solution for a high quality product.
- 
- Control software = Linux = very stable
- 
- Touch screens in various sizes and price ranges.
- 



- Web-based application (Adjustable anywhere via remote PC - cloud based).
- 
- No software installation required on your PC.
- 
- Applicable on ALL operating software (Windows, MAC iOS, Android).
- 
- MT. VISION is not only to use with large screens, mobile screens just to counter are also possible.

**Meditech Headquarters**

Lodewijk De Raetlaan 16  
B-8870 Izegem - Belgium

**E** info@meditech-pharma.com  
**T** +32 (0)51 31 21 81  
**F** +32 (0)51 31 57 85  
**W** www.meditech-pharma.com

**Timon Dejonghe**

General Manager

**E** mts@meditech-pharma.com  
**T** +32 (0)51 31 21 81  
**F** +32 (0)51 31 57 85

**Wim Pieters**

Verkoop Vlaanderen

**M** +32 (0)478 55 61 14  
**E** wpi@meditech-pharma.com  
**T** +32 (0)51 31 21 81  
**F** +32 (0)51 31 57 85

**Gregory de Kerchove**

Responsible Commercial Wallonie

**M** +32 (0)478 48 81 10  
**E** gdk@meditech-pharma.com  
**T** +32 (0)81 63 49 77  
**F** +32 (0)81 81 16 28

**Stéphane Courcelle**

Project Manager

**M** +32 (0)473 83 89 15  
**E** sco@meditech-pharma.com  
**T** +32 (0)51 31 21 81  
**F** +32 (0)51 31 57 85

**Vincent Deltour**

Directeur Commercial France

**M** +33 (0)6 16 16 18 73  
**E** vde@meditech-pharma.com  
**T** +32 (0)51 31 21 81  
**F** +32 (0)51 31 57 85

**Benjamin Wöhlbier**

Projektleiter Deutschland

**M** +4915 25 305 72 85  
**E** bwo@meditech-pharma.com  
**T** +352 24 51 73  
**F** +352 26 62 30 27

**Eric Rottinghuis**

Verkoop Nederland

**E** Eric.Rottinghuis@simacmasic.nl  
**T** +31 (0)45 7502 100  
**F** +31 (0)45 7502 199

**Joachim Nels**

Verkoop G.H. Luxemburg

**E** joachim.nels@3p-automation.lu  
**T** +352 / 26 36 26 70  
**F** +352 / 26 36 26 72

**Frederic Lemaire**

Chargé d'affaire Ile-de-France

**M** +33 (0)6 78 25 24 24  
**E** info.idf@meditech-pharma.com  
**T** +32 (0)51 31 21 81  
**F** +32 (0)51 31 57 85

**Jean Luc Fourmond**

Chargé d'affaire Ile-de-France

**M** +33 (0)6 09 85 64 97  
**E** info.idf@meditech-pharma.com  
**T** +32 (0)51 31 21 81  
**F** +32 (0)51 31 57 85

**Gilles De Ribas**

Chargé d'affaire Océan Indien

**M** +33 (0)6 31 21 61 65  
**E** oceanindien@meditech-pharma.com

**Philippe Picard**

Chargé d'affaire Rhône Alpes

**M** +33 (0)6 13 93 77 55  
**E** info.est@meditech-pharma.com  
**T** +32 (0)51 31 21 81  
**F** +32 (0)51 31 57 85

**Marc Ruby**

Chargé d'affaire Grand Est

**M** +33 (0)6 44 31 54 25  
**E** info.nordest@meditech-pharma.com  
**T** +32 (0)51 31 21 81  
**F** +32 (0)51 31 57 85

**Veronique Delpeyroux**

Chargé d'affaire Limousin

**M** +33 (0)6 31 21 61 65  
**E** info.limousin@meditech-pharma.com  
**T** +32 (0)51 31 21 81  
**F** +32 (0)51 31 57 85

**Koray Kibar**

Verkoop Turkije

**M** +90 531 527 9205  
**E** k.kibar@kibarpharma.com  
**T** +31 646 98 99 88

**Luc Jean**

Chargé d'affaire PACA

**M** +33 (0)6 63 10 04 63  
**E** info.sud@meditech-pharma.com  
**T** +32 (0)51 31 21 81  
**F** +32 (0)51 31 57 85

**Arnaud Guinhut**

Chargé d'affaire Sud-Ouest

**M** +33 (0)6 37 27 69 97  
**E** info.sudouest@meditech-pharma.com  
**T** +32 (0)51 31 21 81  
**F** +32 (0)51 31 57 85

**Rodolphe Dasquié**

Chargé d'affaire Ouest

**M** +33 (0)7 89 09 92 93  
**E** info.ouest@meditech-pharma.com  
**T** +32 (0)51 31 21 81  
**F** +32 (0)51 31 57 85

**Max Mirande-Ney**

Directeur Technique DOM-TOM Martinique

**M** +33 (0)696 26 56 50  
**E** martiniquetech@meditech-pharma.com

**Roger Tran-Quoc**

Managing Director DOM-TOM Martinique

**M** +33 (0)660 38 45 18  
**E** martiniquecom@meditech-pharma.com

**Stephane Colmez**

Business development manager  
Guadeloupe - Iles du Nord - Guyane

**M** +33 (0)690 55 47 51  
**E** guadeloupe@meditech-pharma.com



LODEWIJK DE RAETLAAN 16

B-8870 IZEGEM

**T** +32 (0)51 31 21 81

**F** +32 (0)51 31 57 85

**E** [INFO@MEDITECH-PHARMA.COM](mailto:INFO@MEDITECH-PHARMA.COM)

[WWW.MEDITECH-PHARMA.COM](http://WWW.MEDITECH-PHARMA.COM) **ENG**